

**A Profile of Your Parish in Numbers**

Our parishioners are the most important resource in our parish. Each of us is called to witness to Jesus every day of our lives. The financial resource of the parish is to support this work of witness. It is to help us grow in knowledge and love of God and each other. It is there for us to use to spread the Word of God.

Much of the information on these two pages is based on the information you provided us. It gives you the opportunity to look again at Mass attendance, age profile, income (including whether fundraising is required to cover your usual running costs), average weekly donation and so on – with some comparison with the figures from your deanery and the diocese. Please look at them carefully to help inform the discussions you will have in your own parish and with your neighbours.

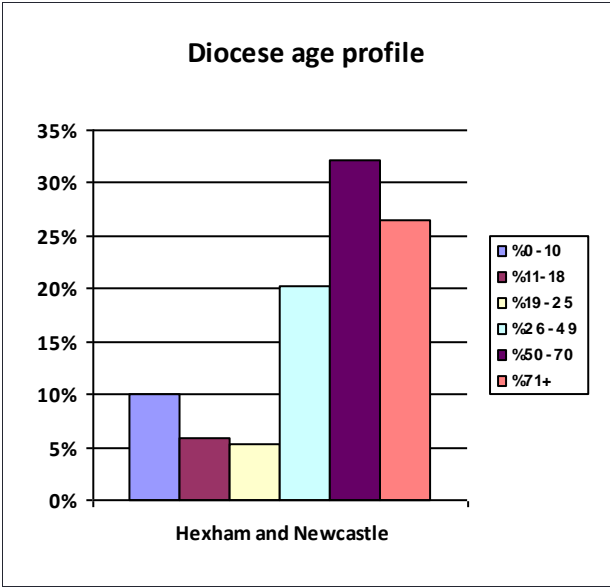
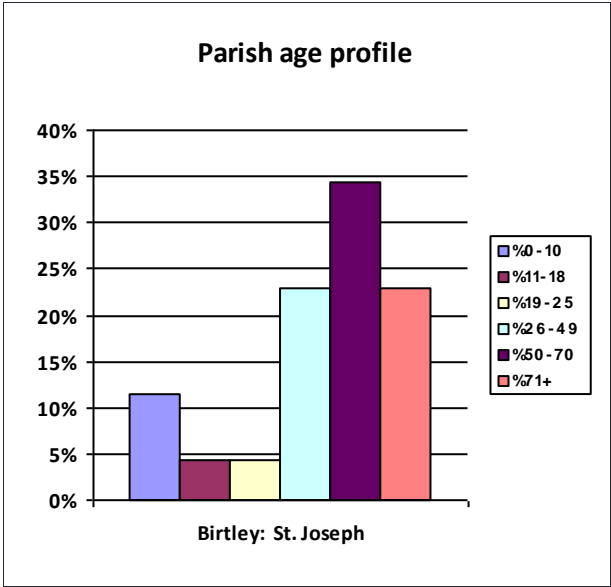
In 2005 the average Mass attendance each weekend in your parish was 445

By 2014 the average Mass attendance each weekend had changed to 343

The number of volunteers with DBS checks working in your parish is 81

The proportion of your congregation that this represents is 22.4%

In your Parish Questionnaire you made an estimate of the age profile of your congregation. This is shown in the graph below along with a similar graph that shows the estimate for the diocese as a whole.



In 2015 your parish reported a total income of £77,301

Your total reported expenditure in 2015 was £63,565

Your parish had a surplus (deficit) of £13,736

*For information, the average parish surplus in the Diocese was £5,500*

On average, your congregation's offertory donation per head was £2.64

The number of Gift Aid donors in your parish was 151

The proportion of your congregation who were Gift Aiders was 44.0%

*More detailed information comparing your parish with your deanery and with the diocese as a whole is shown overleaf. There is also an explanation of the sources used.*

1. Change in Mass attendance between 2005 and 2014 - see note 1

	2005	2014	Change	2015
Parish	445	343	-22.9%	361
Deanery	2539	1978	-22.1%	1807
Diocese	46756	35241	-24.6%	33464

2. Approximate age breakdown of those who attend Mass - see note 2

	0-10	11-18	19-25	26-49	50-70	71+	Total
Parish	40	15	15	80	120	80	350
	11.4%	4.3%	4.3%	22.9%	34.3%	22.9%	100%
Deanery	117	62	54	226	339	223	1021
	11.5%	6.1%	5.3%	22.1%	33.2%	21.8%	100%
Diocese	3302	1932	1763	6668	10588	8725	32978
	10.0%	5.9%	5.3%	20.2%	32.1%	26.5%	100%

3. Gift Aid donors as a proportion of worshippers - see note 3      4. Proportion of worshippers with DBS checks - see note 4

	Number of Donors	% of worshippers		% with DBS
Parish	151	44 %	Parish	22.4%
Deanery	763	38.6%	Deanery	25.8%
Diocese	9721	27.4%	Diocese	23.4%

5. Property costs as a proportion of income - see note 5

	Total Income	Property Costs	Cost as % of income
Parish	£77,301	£25,940	33.6%
Deanery	£432,219	£133,835	31.0%
Diocese	£8,138,244	£2,542,101	31.2%

6. Offertory donation per head - see note 6

	Donation / head
Parish	£2.64
Deanery	£2.82
Diocese	£2.63

- Notes:
1. The percentage change in Mass attendance is calculated using the reported figures for the years 2005 and 2014 and presents the percentage increase or decrease for your parish. Percentage decreases are shown with a minus sign. Provisional figures for 2015 are shown where available.
  2. The age breakdown figures used are those reported by parishes when completing their Forward Together in Hope Parish Questionnaire. In most cases parishes have estimated rather than counted these. Deanery and Diocese figures have been compiled from the information reported by the individual parishes.
  3. Gift Aid donors as at March 2015 as a proportion of Mass attendance (as counted in October 2014).
  4. The proportion of worshippers with DBS checks is based on Diocesan figures compiled at April 2015 and uses the Mass count information for October 2015.
  5. Property costs (for 2014/15 financial year) as a proportion of total income (for 2014/15 financial year).
  6. Offertory donation per head is calculated using the average Mass attendance as counted in October 2014 and the income during the 2014/15 financial year. Parishes with a higher proportion of children may appear to have a lower per capita contribution as all Mass attendees are counted regardless of age.
  7. Some information may be missing from Parish returns, in which case that value will be blank.